

Prom 2024



May 3, 2024
7:00 pm to 11:00 pm
Trickle Creek Ranch- Weatherford, TX
Theme: Rustic & Lights

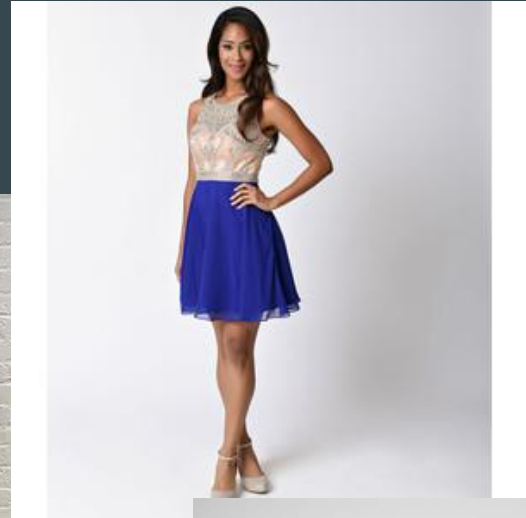
Dresses

- Two piece dresses will be allowed as long as the skirt comes above the navel and the distance between the skirt and top is no greater than 3 fingers width.
- Dresses may be backless as long as they are not cut below the navel. The bust must continue around your sides directly under the armpit. With arms down at your side, if flesh touches flesh below the bust line, the dress is inappropriate.
- **Dresses may not have a slit that exceeds mid-thigh. This is fingertip length.**
- **No plunging necklines** or excessive cleavage
- Dresses must be at least fingertip length if they are a short “cocktail” type dress

Approved Dresses



Approved Dresses



Approved Dresses



DHgate.com weddingpalace

OKBRIDALSHOP

okbridal

Tiffan
DESIGN

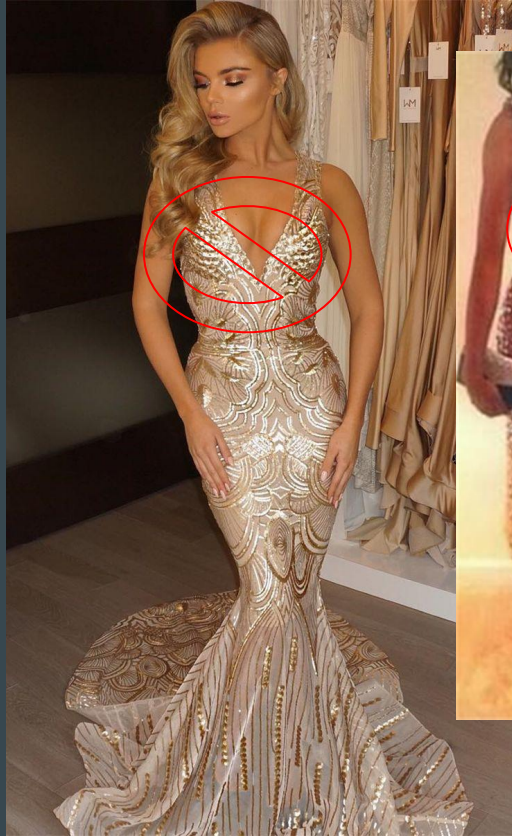
www.aliesdress.com/store/230983

Approved Dresses

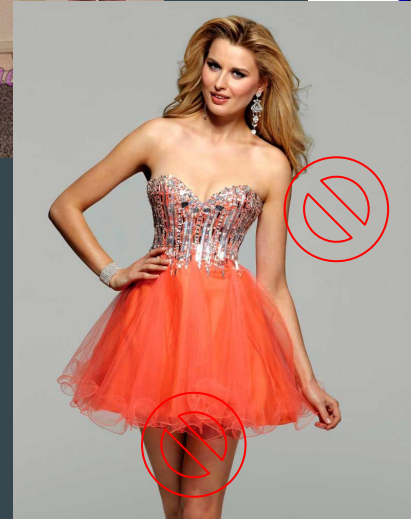




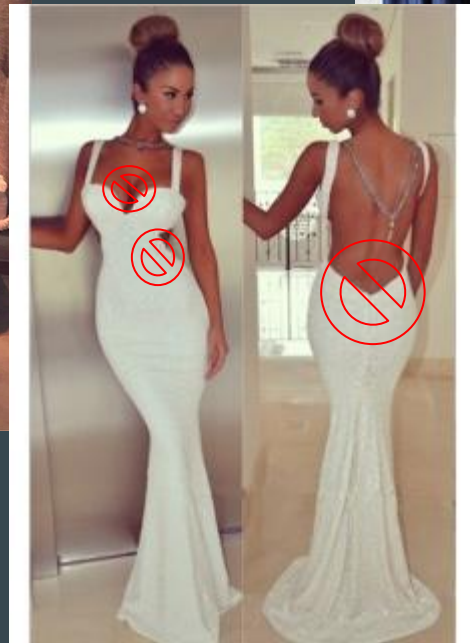
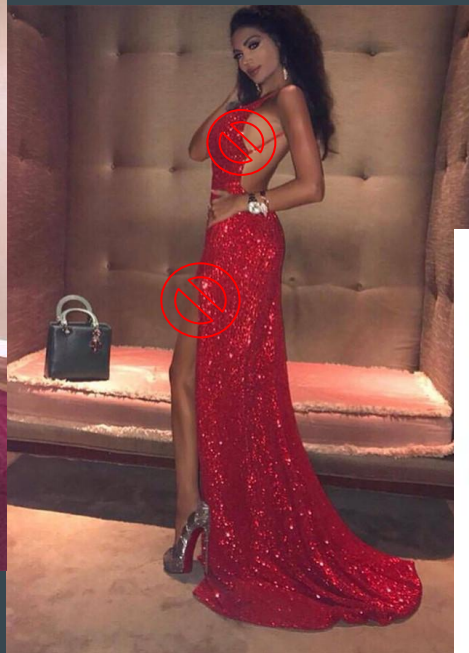
Dresses that are prohibited



Dresses that are prohibited



Dresses that are prohibited

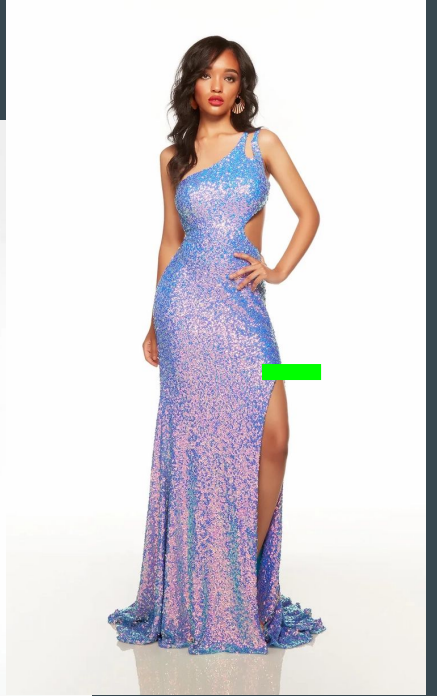


Not
Approved



Too
Low





Other attire requirements

- A tux is permitted, but not required
- Clean pressed slacks or jeans with no holes are permitted
- A collared shirt is required if wearing pressed slacks or jeans
- Clean tennis shoes, dress shoes, or nice boots are permitted
- Shorts, t-shirts, and flip flops are prohibited
- Hats must be removed in the building

If there is a question about your selection please send an email to

spustejovsky@santoisd.net and I will get an answer for you.